

Microsoft Dynamics AX 2012

PREVIEW



Powerfully Simple

Get more value, faster.

Prebuilt industry capabilities—for manufacturing, distribution, services, and Public Sector (with retail coming soon)—and enhanced core ERP functionality, such as the Audit Workbench and budgetary controls, help you meet special business requirements with less customization. Our global solution grows easily with your business and gives people instant, RoleTailored insight and increased productivity.

Plan, see, and change your business with agility.

From enhanced Financial Dimensions to a model-driven layered architecture, you gain both the insight and the ability to quickly adapt to changing business needs and opportunities, free up development and solution resources, and streamline deployment (including flexible hosted and on-premises options), maintenance, and upgrades.

Let simplicity drive adoption and lower costs.

Give users a consistent, familiar experience, effortless Microsoft Office interoperability, and improved collaboration across the extended supply chain. IT staff can focus on strategic development with simplified application life cycle management.

Microsoft and pervasive interoperability

What drives these capabilities? *Pervasive interoperability*—the interaction of ERP systems, business and productivity applications, communications solutions, and the underlying technology platform—that works on-premises or in the cloud. Microsoft Dynamics AX 2012 and other Microsoft products and technologies are built to deliver pervasive interoperability, and a global ecosystem of knowledgeable partners is available to help you realize the benefits. All of which makes upgrading to Microsoft Dynamics AX 2012 a sound strategic decision.

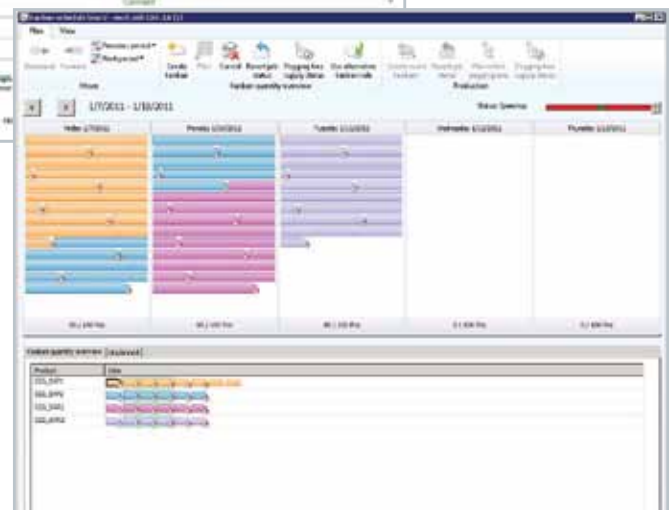
Microsoft is committed to continually deliver powerful, agile, easy-to-use solutions that add value across your organization, today and tomorrow. The coming release of Microsoft Dynamics® AX 2012 is a delivery on this commitment. With more than 1,000 new features and enhancements across core enterprise resource planning (ERP) and industry capabilities, Microsoft Dynamics AX 2012 will help provide more business value faster, enable agility and insight in your organization, and help drive faster adoption, broader usage, and easier maintenance and upgrade through a continued emphasis on simplicity.

Couple this with a constant focus on pervasive interoperability—the natural interaction of ERP systems with Microsoft® business productivity applications and IT infrastructure technology—and the coming release will help sharpen your competitive edge and empower your people to anticipate and embrace change.



Consolidate role-specific information, workflow, reports, task lists, links and KPIs on a single easily-customized Role Center to enable fast, convenient review and action, whether you're using the Windows client or a web browser.

User interfaces such as the Kanban scheduling board feature an intuitive visualization to help you stay on top of production job status.



Microsoft Dynamics AX 2012

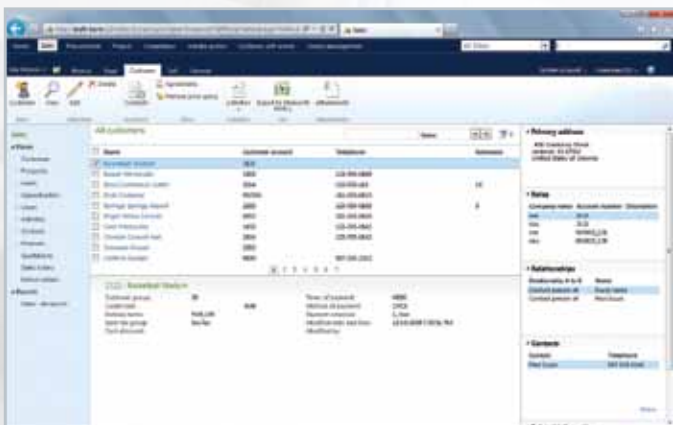
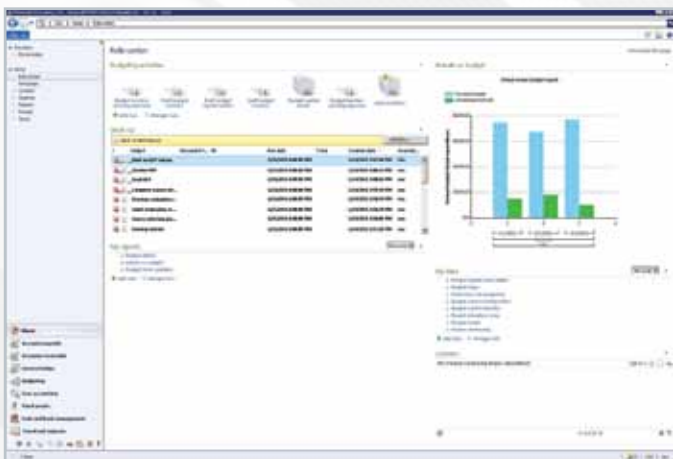
PREVIEW

RoleTailored User Interface

The enhanced RoleTailored user interface spans the the Microsoft Dynamics AX Windows client and Enterprise Portal and helps to drive productivity and business insight through its familiar user experience and connection with business processes. Microsoft Word and Excel®, familiar and powerful tools that workers already know and use, work bidirectionally with Microsoft Dynamics AX 2012 to enhance worker productivity, and a more flexible Help system provides added support when needed.

RoleTailored ERP client

- Improve productivity with enhancements to the RoleTailored user interface such as FactBoxes, Fast Tabs, and Preview Panes that let you view data from multiple sources without leaving the current form. Highlight relevant items, multitask, visualize information in useful new ways, and reduce chances of accidentally changing the data. In this release new Role Centers will be included, such as Treasurer and Budget Manager.



Budget Manager Role Center and Customer List Page

Enterprise Portal based on Microsoft SharePoint® technology

- A smoother interface improves the user experience overall with Action Panes and more configuration options. Collaboration workspaces allow teams to quickly organize and share information about projects, marketing campaigns, and opportunities. And Windows Live® ID authentication, improved search, and appearance of pages fosters productivity.

Microsoft Office add-ins

- Microsoft Office add-ins enable you to use Microsoft Word to build templates and documents that combine structured and unstructured information from Microsoft Dynamics AX. Use Excel and Word add-ins to view, analyze, and update information in Microsoft Dynamics AX. Bidirectional interoperability enables users to access and refresh data in Microsoft Dynamics AX without leaving Excel and Word.

New Help system

- Make Help more relevant to your business by customizing topics, enabling others in the organization to create Help documentation, promptly applying and distributing updates, and using Search and the Help viewer to find Help on your network or the web.

Built-in Industry Capabilities

Microsoft Dynamics AX 2012 is purpose-built for organizations in manufacturing, Public Sector¹, services, and distribution (with retail coming soon), delivering industry-specific capabilities out-of-the-box. New in this release is support for public sector organizations. Microsoft Dynamics AX 2012 uniquely combines industry-specific capabilities in one solution and makes them available to all customers, benefiting organizations that require capabilities for more than one industry.

Manufacturing

- Utilize the flexibility of Microsoft Dynamics AX 2012 to run process and discrete manufacturing models in a single solution. The mixed-mode capability also allows implementation of lean manufacturing practices in the way best suited for your company.
- Take advantage of a new operations resource model to efficiently use resources at multiple locations. Schedule resources (vendors, people, machines, tools, or locations) to jobs and operations based on their capabilities (ability to perform a specific production-related activity). A scheduling engine will handle resource selection.
- Model and execute lean manufacturing on production flows to reduce delivery lead times, trim excess inventory between work centers, treat contractor labor as a service (not a BOM component), and support continuous improvement by using kanban boards, event kanbans, and kanban rules to view, plan, and run kanban jobs.
- Use the new constraint-based Product Configurator to efficiently create, maintain, and reuse product models, components, and attributes.

¹ In four countries currently.

- Let shop floor workers use the touch-enabled job registration form to register time and quantities produced; use this functionality to let shop floor supervisors prioritize jobs and perform actions such as start/stop jobs.

Public Sector

- Use unlimited dimensions to support public sector fund accounting and expanded reporting capabilities for fund, program, function, organization, grant, project, location and object.
- Facilitate multiyear budgeting, accounting, and reporting for projects and grants with the capability to track multiple funding sources and automatically distribute funds according to program guidelines, including: 1) linking transactions to specific funding sources; 2) prioritizing funding sources; 3) restricting funding sources to specific activities or classes of expense; and 4) providing support for matching funds and grants.
- Define accounting distributions and view subledger journal entries prior to journalizing source documents.
- Use posting definitions to automatically generate "due to/due from" entries between different funds.
- Implement a flexible departmental billing engine for efficient collaboration with customers, while significantly reducing process management time requirements.

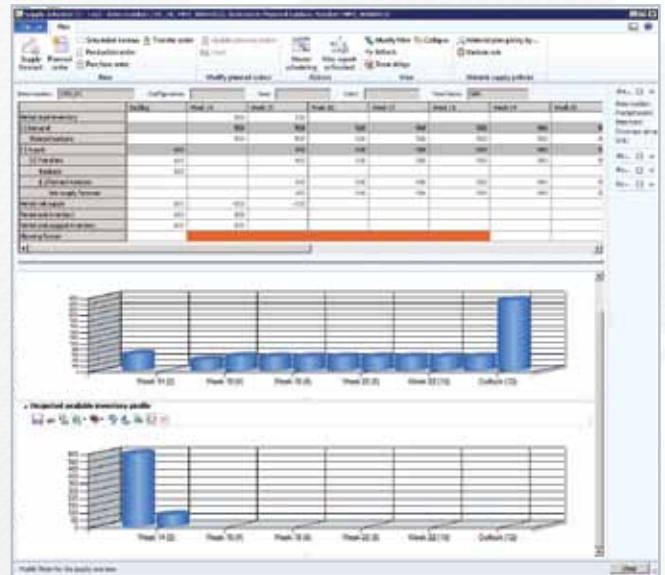
Service industries

- Strengthen proposal management, project quotation, and project budget control with complex work breakdown structures, milestone definitions, task assignments, and deliverable specification.
- Improve your ability to forecast, plan, and ultimately schedule the right resources onto projects at the right time and in the right place, matching individual skills and capabilities to service tasks and project goals.
- Take advantage of Workspace Collaboration in Microsoft SharePoint Server to increase project collaboration and foster application of best practice service-delivery methodologies. Build on that foundation to connect with service partners and clients in richer and more interactive ways.

Distribution

- Improve supply chain planning capabilities across your organization, using new views that display all intercompany supply and demand. In addition, planned intercompany demand is visible for upstream companies within the organization, and can be considered in master planning. Planning and management are also supported with a full view of intercompany order-pegging using a multilevel pegging form.
- Sales order process enhancements allow users to place orders in a more productive way, allowing faster order entry by limiting the amount of information to be entered. This permits easier access to sales order header or line details as well as expert features allowing users to modify default settings and customize sales orders.

- Other features include pricing enhancement to manage mass changes, smart rounding rules based on currency and amount, and translation of prices in multiple currencies based on a reference price list.



Supply Scheduling

Core ERP Suite Capabilities

Microsoft Dynamics AX 2012 raises the bar for delivering powerful ERP capabilities and supporting operational efficiency in many key functional areas. Microsoft Dynamics AX 2012 includes new capabilities such as supplier relationship management, case management, and the Audit Work Bench, as well as important enhancements in the following domains: finance, sales and marketing, procurement, project accounting, human capital management, supply chain management, inventory management, and global risk and compliance.

Financials

- Quickly create unlimited, form-based financial dimensions that can be shared across legal entities for a complete business view, audit trail transparency, and detailed analyses.
- Transform budget information into precise, workflow-driven management tools with multiple, variable, and hierarchical budgetary controls that allow you to define how you want to manage expenditures and achieve greater control of the procurement process.
- Set up, view, and manage encumbrances, including purchase order commitments, in the general ledger, and manage workflow items with respect to year-end processing and encumbrances.

Microsoft Dynamics AX 2012

PREVIEW

- Streamline the cash-to-collections process to save time, engage efficiently with customers, and improve cash flow.
- Simplify and help ensure accurate processing of requisitions, orders, invoices, and other key transactions by defining accounting distributions and viewing subledger journal entries before journalizing source documents.
- Improve accounts payable operational efficiency with new capabilities to match invoices, allocate charges, process and track purchase order prepayments, add lines to invoices, and more.
- Define and control the information you capture more precisely to achieve better insight into your business.
- Increase productivity and accuracy as you leverage architectural advances to share key financial data among legal entities.
- Sharply reduce time and effort for year-end closing with enhancements that include purchase order rollover and budget carry-forward options.

Sales and marketing

- Use the Microsoft Dynamics CRM Connector to access information in Microsoft Dynamics CRM 2011, both on-premises and online.
- Efficiently open, assign, resolve, and follow up on customer service, collections, and similar issues using new case management capabilities.

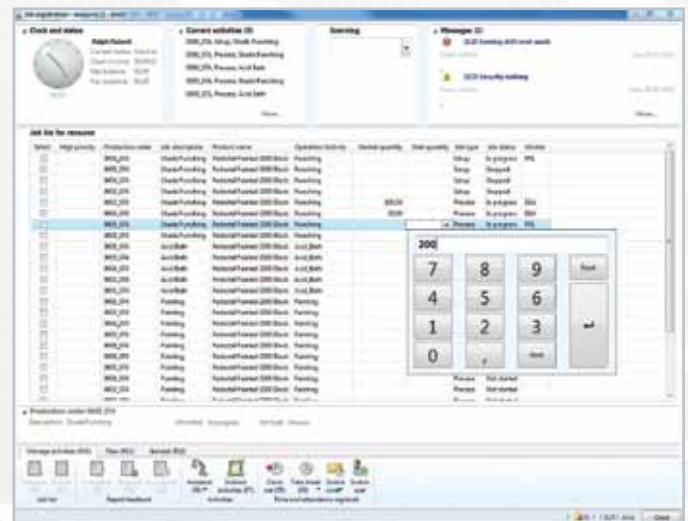
Procurement and sourcing

Procurement and sourcing in Microsoft Dynamics AX allows managing direct and indirect procurement of goods and services. In Microsoft Dynamics AX 2012 the following enhancements have been made:

- Self-service capabilities: empower workers to order day-to-day goods and services from searchable online catalogs. Help vendors operate more efficiently by enabling them to perform a variety of tasks online, such as updating profile data, requesting additional users, requesting the scope of their offering be expanded, uploading catalog content, submitting invoices, reviewing payments, and more.
- Import, create, edit, stage, publish, and search catalogs of items for internal consumption on an internal shopping site. Or punch out directly to your vendor catalog.
- Create a virtual workplace where category managers can manage overall spending by category.
- Utilize requisition aggregation, work queue management, category management, and other procurement functionality through a procurement-based Role Center.
- Establish a centralized procurement desk capability across your organization to support procurement policies and processes.
- Easily set up and maintain one or more different purchasing policies and apply them to different sets of requisitioners across the organization.

Supply chain management

- Easily convert a purchase order line or sales order into a delivery schedule and maintain total order discount eligibility even when multiple deliveries result.
- Support quality management with a new inventory blocking feature that works manually or on an automated basis to enjoy greater flexibility and granularity in quality order specification, and more.
- Improve your ability to report the value of goods in transit between companies, using two new reports in Microsoft Dynamics AX 2012.



Touch Screen capabilities in Manufacturing Execution System

Project management and accounting

- View a summary as the project budget is created, compare against funding, and make corrections before submission.
- Create and manage projects in Enterprise Portal to enable remote access and reduce software installation and update issues.
- Make time sheet entries more efficiently with enhanced time entry capabilities and user experiences from a web browser or the client application.
- Allocate and post revenue based on internal sales prices for workers, categories, and dimensions, enabling profitability monitoring by allocation area.
- Improve management of complex portfolios of projects and next-level optimization of resource schedules through enhanced integration with Microsoft Project Server 2010.

Human capital management

- Improve individual productivity by referring to Role Centers for data, alerts, task lists, and reports pertinent to specific job functions; more than two dozen predefined Role Centers can be accessed from the Enterprise Portal or Microsoft Dynamics AX Windows client.
- Use the Employee Portal and workflow tools to enforce spending and approval policies at a more granular level, and to enable employee self-service for performance goal management.



Employee Services in Enterprise Portal

- Transfer and view employee records easily, and reduce manual process steps in recruiting, onboarding, development, transfer, and termination.
- In Microsoft Dynamics AX 2012, the Expense Management application for the Enterprise Portal is improved in many areas to help streamline processes and improve productivity. This includes the expense entry, cash advance request, credit card dispute, travel requisition, and expense report delegation. In addition, the approval experience for expense reports, travel requisitions, and cash advances are improved or introduced.

Global risk and compliance

- Define/refine your corporate policies and automate the auditing process with the Audit Workbench.
- Track energy consumption and greenhouse gas emissions to proactively monitor your organization's environmental impact: use the enhanced Environmental Sustainability Dashboard and the new, associated data cube to keep aware of energy consumption, carbon footprint, and KPIs for waste and water usage. Take advantage of a graphical interface for easy setup and "what-if" capabilities to help you assess the impact of proposed changes.
- Help ensure organizational compliance with laws, regulations, policies, and business rules through Compliance Center enhancements including improved Internal Controls capabilities, the new Default Controls Library, and the new Import and Mapping Wizard.

Country-specific capabilities

- To control feature availability based on the location of the legal entity, Microsoft Dynamics AX 2012 uses the country associated with the legal entity's primary address. For example, if the address of the legal entity is in Canada, users can see and work with Canada-specific features.
- Microsoft Dynamics AX 2012 offers a range of capabilities that support country-specific localization. To learn more, visit CustomerSource.

Application Foundation

Master data, reference data, and global engines are the foundation of the application. In Microsoft Dynamics AX 2012 the enhancements in these three areas simplify the definition of master and reference data and the use of global engines across the multi-entity enterprise.

Master data

- Organization model: model organizational structures more accurately, capturing more hierarchies and greater detail, to enable more sophisticated reporting, improved security, and easier data sharing.
- Global Address Book: create multiple address books, manage address book access, selectively enforce policies by address book, and create applicant records directly from application forms.
- Product information management: create and maintain product definitions and master definitions for sets of products across the entire organization, and share them across companies to maintain centralized product repository control.



Organization Model

Reference data

- Time zone enhancements: easily set and change time zone preferences, support multiple time zones, synchronize time zone preferences with local time zones, and view different time zone information for transactions.

Global engines

- Policies management: utilize this new capability to help implement a unified procurement strategy across employees, purchasing agents, and vendors.

Microsoft Dynamics AX 2012

PREVIEW

Business Intelligence and Reporting

Microsoft Dynamics AX 2012 BI and Reporting includes more than 800 Microsoft SQL Server® Reporting Services reports, 11 SQL Server Analytics Server data cubes, and enhancements to the framework.

Microsoft SQL Server Reporting Services

- Microsoft Dynamics AX production reports combine the power of SQL Server Reporting Services with the simplicity and flexibility of Microsoft Dynamics AX. Along with more than 800 built-in reports, Microsoft Dynamics AX 2012 will provide a wizard-based migration tool for existing X++ reports and integrated, role-based security options.
- Help meet exacting reporting requirements and reduce IT workload, with auto-generation of SQL Server Reporting Services reports, and create basic reports using the Microsoft Visual Studio® 2010 Charting Control.
- Support global operations: develop a report in one language, and let the reporting framework produce reports in multiple languages.

Microsoft SQL Server Analysis Server

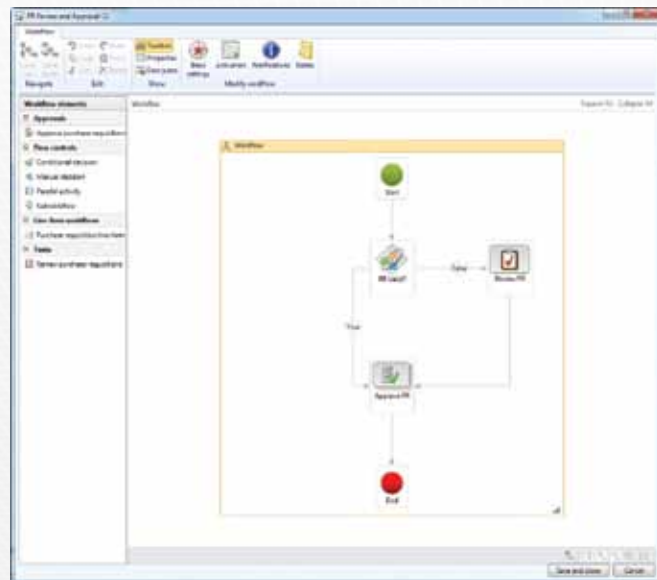
- Instantly identify and take action on business process issues using new cubes for workflow and environmental sustainability. Track history and current status, and generate performance analysis reports.
- Easily implement, configure, and customize prebuilt data cubes using a wizard-driven UI, which helps you deploy prebuilt business intelligence solutions when you set up Microsoft Dynamics AX 2012.

Framework

Microsoft Dynamics AX 2012 structural enhancements can improve operation IT efficiency in your organization and return more value to you. Some of these enhancements are a graphical workflow editor and cloud-based services that help reduce IT complexity and front-end capital requirements. Application Integration Framework enhancements and new programming concepts help IT professionals write less code. Role-based security accelerates the implementation of internal controls. And a host of new and improved Enterprise Portal features deliver the benefits of Microsoft Dynamics AX 2012 through the Internet and a web browser.

Workflow

- Powerful new capabilities enable creation of more complex workflows and separate workflows for each line associated with a header, even automated workflows requiring no human intervention. The Graphical Workflow Editor enables drag-and-drop functionality for workflow creation. Work Item Queues help users control what they work on and load balance across the team when necessary.



Graphical Workflow Editor

Services (sites, payment, and commerce services)

- Support your end-to-end business processes with cloud-based services that are cost-effective, easy to deploy and use, and integrate fully with your existing on-premises or hosted Microsoft Dynamics AX implementation. Sites Services for Microsoft Dynamics ERP extends Microsoft Dynamics AX 2012 business processes and workflows on the web, empowering business users to collaborate with their customers and vendors with minimal IT investment. Payment Services for Microsoft Dynamics ERP is a PCI-certified Level 1 Payment Gateway. Out-of-the-box, it supports authorization, settlement, voids and refunds, address verification, and business card Level 2 and 3 processing. Commerce Services for Microsoft Dynamics ERP provides integration between Microsoft Dynamics AX 2012 and the organization's online sales channels. The Microsoft Dynamics Online Connect Gadget Web Part for Role Centers hosts a slide deck of links and information relevant to a user's role, including links to CustomerSource, community content, training materials, and knowledge base articles. This gadget can be added to the Role Center master page or to personal Role Center pages.

Services and application integration

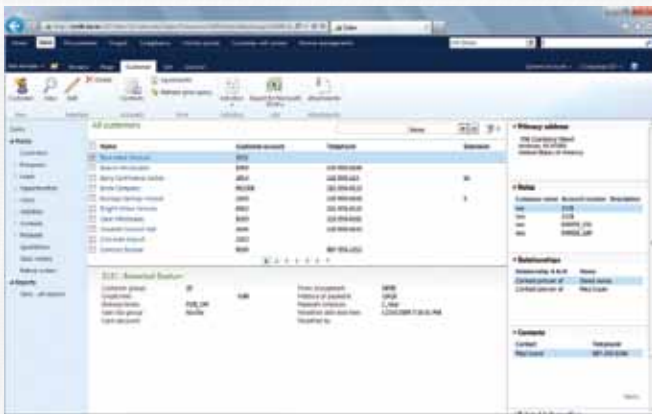
- Take advantage of new capabilities such as: exposing X++ business logic as a service to external systems to extend the life of X++ code investments, including more than 90 document services; integration supports that include non-XML file format support, flexible error handling, bulk import support; accessing service groups easily; using business operation framework to write applications; and consuming external services from X++. Simplify configuration and administration of services.

Role-based security

- Create security permissions for individual application objects to simplify maintenance and enable reuse of security constructs. Implement security policies for individual table records, offering greater granularity. Simplify configuration and administration of services.

Enterprise portal enhancements

- Enterprise Portal integrations can be developed easily using Visual Studio 2010. Enterprise Portal supports table hierarchies for more efficient database structures, and a new security model offers greater control.



Customer List in Enterprise Portal

New programmability concepts

- Implement a set of new capabilities that improve data model design and reusability of schema components, and that contribute to the development, use, and maintenance of more flexible, accurate, productivity-enhancing information and reporting.

IDE

- All application elements are stored in a single repository and distributed in physical modules called Models. Models can easily be combined to add capabilities. Both MorphX and Visual Studio tools are available for developers.

Data upgrade framework enhancements

- Conduct data upgrade with reduced business downtime by performing the majority of your upgrade on a live Microsoft Dynamics AX system and using a new source-to-target model, which scales up using a high degree of parallelization between various upgrade stages.
- Upgrade directly from Microsoft Dynamics AX 4.0 or Microsoft Dynamics AX 2009 to Microsoft Dynamics AX 2012.

Microsoft Business Productivity Applications and IT Infrastructure Technology

A core strength of Microsoft Dynamics AX 2012 can be found in its interoperability with other Microsoft products and technologies. From a technical perspective, this strength fosters efficient, cost-effective development. Users enjoy the benefits of interoperability in greater productivity and data integrity.

SQL Server model store

- Maintain one store for data and metadata in the Microsoft SQL Server model store.

Visual Studio 2010 support

- Take advantage of the integrated development experience, new tools, and Visual Studio 2010 resources—available worldwide—to model business application elements that integrate into Microsoft Dynamics AX 2012. Manage source code, including branching and work items, more effectively with Microsoft Team Foundation Server 2010.

Microsoft solutions, applications, and technologies

- Microsoft Dynamics AX 2012 capabilities support Microsoft SQL Server 2008 R2 (including SQL Server Reporting Services and SQL Server Analysis Services); Microsoft SharePoint Server 2010; Microsoft Search Server 2010, Microsoft Search Server Express 2010, and Microsoft Fast Search Server 2010; Microsoft Office 2010; Microsoft Project Server 2010; and Microsoft Visual Studio 2010.

Full system requirements will be published closer to general availability of Microsoft Dynamics AX 2012.





Take the next step toward becoming a dynamic business—the Microsoft Dynamics vision for companies that can continuously evolve to face economic, operational, and organizational challenges. By planning your future upgrade to Microsoft Dynamics AX 2012, your organization can become more agile, so you can adapt quickly to change, expand into new markets, and develop innovative products and services.

Talk to your partner about the business benefits that an upgrade to Microsoft Dynamics AX 2012 could offer.

FOR MORE INFORMATION ABOUT

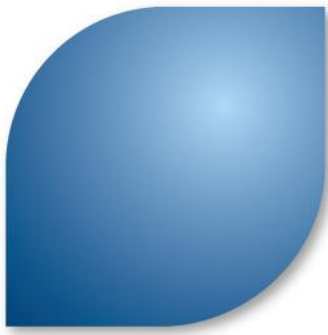
Microsoft Dynamics AX 2012, visit:
www.microsoft.com/dynamics/ax



© 2011 Microsoft Corporation. All rights reserved. All other trademarks are property of their respective owners.

Microsoft Dynamics AX 2012 is a pre-release product under development. The information herein is for informational purposes only and represents the current view of Microsoft Corporation as of the date of this factsheet. Because Microsoft must respond to changing market conditions, it should not be interpreted to be a commitment on the part of Microsoft, and Microsoft cannot guarantee the accuracy of any information provided after the date of this factsheet. All pre-release product release dates and features specified are preliminary based on current expectations, and are subject to change without notice. Microsoft may make changes to specifications and product descriptions at any time, without notice.

MICROSOFT MAKES NO WARRANTIES, EXPRESS, IMPLIED OR STATUTORY, AS TO THE INFORMATION IN THIS PRESENTATION. NO LICENSE, EXPRESS OR IMPLIED, BY ESTOPPEL OR OTHERWISE, TO ANY INTELLECTUAL PROPERTY RIGHTS IS GRANTED BY THIS PRESENTATION.



Microsoft Dynamics AX 2012 for Education Institutions



Real Impact Solutions for Better Measurement and Improved Outcomes

Microsoft Dynamics AX 2012: Powerful. Agile. Simple.

Educational institutions today face daunting economic pressures and shortages of capital from government and donor funding sources. Leaders are looking for ways to control costs while still providing high quality service and preserving programs. They need to support a steady - or growing - number of students with fewer resources and staff.

Microsoft Dynamics® AX 2012 helps educational institutions overcome these challenges and achieve their mission with a powerful enterprise resource planning (ERP) solution purposely built for better measurement and improved outcomes in education.

Doing more with less requires educational institutions to modernize workplaces and automate business processes. This involves getting the right information to the administration and faculty, keeping pace with institutional policy changes, planning carefully, and effectively delivering services to students, faculty and staff. Maintaining the transparency of information allows educational institutions to consolidate services and reduce costs. Efficiently creating, tracking, and reporting financial, HR, grant and donor funding, and student and teacher performance data enables institutions to meet policies, control budgets, operate with accountability and better measure and improve outcomes.

The powerful Microsoft Dynamics AX 2012 solution helps you manage finances, procurement, HR, funds, endowments and grants, facilities and assets, admissions and enrollment, student and teacher performance, alumni and more — all with a low total cost of ownership (TCO) and increased time to value. Integrated workflow and a flexible configuration help increase your agility in responding to changes in the environment and modifying business processes when necessary. An easy-to-use, familiar user experience will give your people quick access to data in familiar tools such as Microsoft® Excel®, Microsoft Outlook®, and Microsoft SharePoint®.

Microsoft Dynamics AX 2012 reflects our commitment to deliver the full breadth and depth of Microsoft innovation to educational institutions. The Microsoft vision for educational institutions is one in which workers easily and securely gain access to specific information and tools they need to perform their individual roles, from a single source: Microsoft Dynamics AX 2012.

"Our key benchmarks are high test scores and low per-pupil costs. With Microsoft Dynamics, we have increased the efficiency of our business office operations and cut our software maintenance and development costs to continuously achieve high performance in these areas."

— David Matyas, Business Administrator, Central Bucks School District, PA



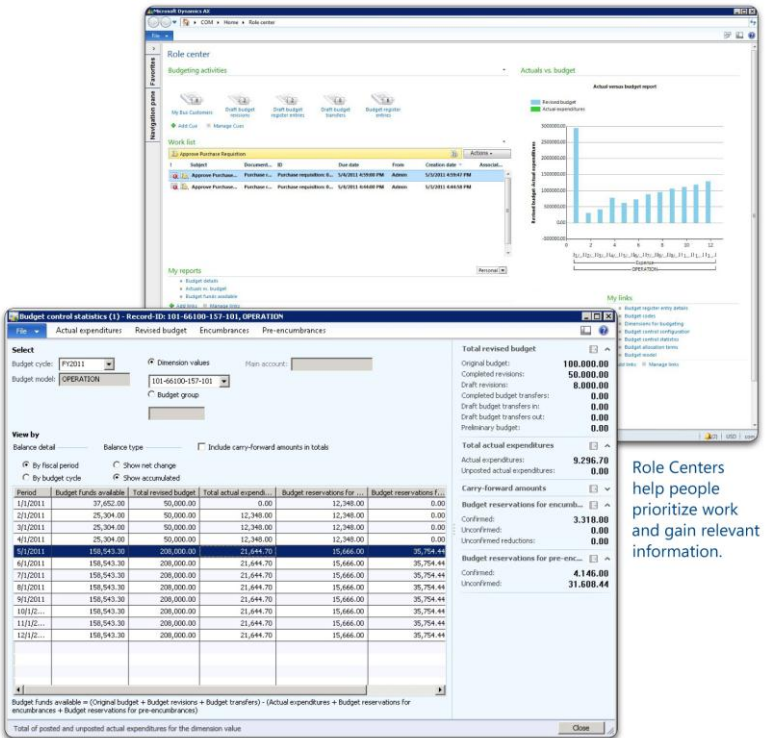
POWERFUL:

Achieve operational efficiency faster with increased reliability.

Microsoft Dynamics AX 2012 is purposely built for educational institutions: Manage complex institutional policy, budget, and grant compliance requirements to optimize the use of funds. Powerful capabilities built to address the unique business needs of education and to help increase accountability, transparency, and performance.

Improve delivery of education: Proactively track funds, expenditures, and personnel resources against defined budget objectives. Quickly access real-time information to power your institution's decision making and help control spending.

Empower your people: Increase productivity across multiple organizations with Shared Services. Tailored Role Centers and webpages provide users with instant access to information to prioritize tasks and connect to key business processes.



Accessing information is simplified with intuitive navigation and report generation.

AGILE:

Respond to changing requirements and new institutional demands.

Adapt easily to evolving institutional needs: Integrated customer relationship management (CRM) tools can help you gain deeper insight into corporate and alumni relations, admissions and enrollment, facilities and asset management, recruiting and staffing, student and teacher performance, and more. As a result, you can use this insight to adjust business processes for better measurement and outcomes. Flexible budget controls give you the agility to align resources with budget objectives.

Address institutional mandates: Adapt to changing institutional policies and administrative requirements with real-time insight and configurable workflows. Manage grants, funds, assets, and endowments as effectively as possible and comply with shifting policy demands.

Support transparency and accountability: Budget visibility increases organizational transparency and agility, helping you avoid budget overruns before funds are committed. Role-based security enforces better control and accountability.

SIMPLE:

A familiar user experience provides easy access to the information you need.

The familiar Microsoft user experience is easy to learn and intuitive to use: Simple, innovative user interfaces shorten time to benefit. The intuitive user experience streamlines processes for requesting, ordering, and receiving goods and services. A flexible, fund-based chart of accounts simplifies data entry and addresses accounting requirements issued by the GASB (Government Accounting Standards Board).

Simplify information sharing: Vendor self-service capabilities improve supplier interactions and the procure-to-pay cycle. Simple, easy collaboration among team members and departments fosters cost reduction while an easy-to-use employee portal facilitates rapid ordering and travel expense approvals.

Role Centers help people prioritize work and gain relevant information.



Microsoft Dynamics AX for Education

Familiar User Experience	<ul style="list-style-type: none"> ○ Deliver RoleTailored access to information, tasks, and business processes. Personalized Role Centers for finance directors, budget managers, and others provide access to unified work lists, visual task queues, business processes and reports, business notifications, key performance indicators (KPIs), and other important information. ○ Simplify data access with familiar Microsoft tools, including Microsoft Word, Excel, and SharePoint. ○ Enhance productivity and business insight through a familiar user experience of RoleTailored user interfaces, consistent across Microsoft Dynamics AX clients and enterprise portals running Windows®.
Financials	<ul style="list-style-type: none"> ○ Enforce legal appropriation compliance and simultaneously allow lower-level departmental budgets with multiple, variable, and hierarchical level budgetary controls. ○ Make organizational commitments transparent using encumbrance and pre-encumbrance accounting with integrated workflow. ○ Gain easy and instant insight into your organization with a fund-based account classification structure. Unlimited financial dimensions and expanded reporting capabilities accommodate funds, programs, functions, organizations, projects, grants, donations, and locations to support government-specific accounting practices. ○ Help facilitate efficient collaboration with customers while helping to significantly reduce billing process management time by using a flexible billing engine that accommodates the diverse needs of users' departments.
Constituent Relationship Management	<ul style="list-style-type: none"> ○ Help improve services for key stakeholder relationships -Parents, Volunteers, Corporate Partners, Donors - through customer relationship and case management capabilities. Microsoft Dynamics AX 2012 includes a connector to Microsoft Dynamics CRM and supports both online and on-premises versions.
Project Management and Accounting	<ul style="list-style-type: none"> ○ Easily manage initiatives with multiyear grant and project accounting. Track multiple funding sources to automatically distribute funds according to program guidelines to facilitate multiyear budgeting, accounting, and project and grant life-cycle reporting. Set up, manage, and improve project management through integration with Microsoft Project Server 2010. ○ Manage project and grant funding by associating multiple funding sources with a project or grant, optionally linking any transaction to a specific funding source, prioritizing funding sources, and restricting funding sources to exclusive activities or classes of expenditures.
Procurement and Sourcing	<ul style="list-style-type: none"> ○ Use procurement and sourcing in Microsoft Dynamics AX 2012 to facilitate direct and indirect procurement of goods and services. ○ Take advantage of self-service capabilities to empower employees to order day-to-day goods and services from searchable online catalogs. ○ Help vendors operate more efficiently by enabling them to perform a variety of tasks online, such as updating profile data, requesting additional users, updating commodity and catalog content, submitting invoices, reviewing payments, and more. ○ Establish a centralized buyer capability across your organization to support procurement policies and processes. Easily set up and maintain multiple purchasing policies and apply them to different sets of purchasers throughout the organization.
Compliance and Internal Controls	<ul style="list-style-type: none"> ○ Use built-for-government and education accounting capabilities and workflow tools to help ensure compliance with regulatory and administrative policy requirements. ○ Take advantage of the Audit Workbench to define your organization's policies and automate the auditing process. ○ An Environmental Sustainability Dashboard helps track energy consumption and carbon footprint. ○ Help ensure organizational compliance with laws, regulations, policies, and business rules, including internal controls through the Compliance Center.



Human Capital Management	<ul style="list-style-type: none"> ○ Manage your human resources with Human Capital Management including benefits administration, absence management, compensation management, injury and illness tracking, employee development, and competency management. ○ Transfer and view employee records easily, and reduce manual process steps in recruiting, onboarding, development, transfer, and termination. 								
Employee Portal	<ul style="list-style-type: none"> ○ Use the Employee Portal and workflow tools to enforce spending, allow approval policies, and to enable employee self-service for performance goal management. ○ Easily manage expenses with Expense Management and integrated workflow including travel requisition, cash advance request, expense entry, credit card reconciliation, and expense report delegation. 								
Tools	<ul style="list-style-type: none"> ○ Automate business processes through a graphical workflow editor to create business rules and custom workflows (or use templates) by business analysts. ○ Help ensure segregation of duty and minimal setup and maintenance of user accounts with role-based security and single sign-on capabilities. ○ Make organization modifications easily in Microsoft Visual Studio® and X++ development environments. ○ Ease application-to-application and business-to-business integration with a flexible services and application integration framework. 								
Business Intelligence and Reporting	<ul style="list-style-type: none"> ○ Give employees instant access to information with built-in reports based on Microsoft SQL Server® Reporting Services. Automatically generate custom reports with Microsoft SQL Server Report Builder, an ad hoc query tool. ○ Enable self-service business intelligence with prebuilt data cubes that can be displayed as KPIs in employees' Role Centers and viewed with more detail in Excel. ○ Use the Active Directory® service and single sign-on to ensure that information is securely accessed by the right people. 								
Microsoft Platform Interoperability	<ul style="list-style-type: none"> ○ Maximize your existing IT investments, lower TCO, and make additional productivity gains through Microsoft Dynamics AX 2012 interoperability with other key Microsoft technologies, including: <table border="0" data-bbox="414 1249 1144 1375"> <tr> <td>Microsoft Office</td> <td>Microsoft Lync™</td> </tr> <tr> <td>Microsoft SharePoint</td> <td>Windows and Windows Server®</td> </tr> <tr> <td>Microsoft SQL Server</td> <td>Microsoft .NET</td> </tr> <tr> <td>Microsoft BizTalk® Server</td> <td>Microsoft Visual Studio</td> </tr> </table> 	Microsoft Office	Microsoft Lync™	Microsoft SharePoint	Windows and Windows Server®	Microsoft SQL Server	Microsoft .NET	Microsoft BizTalk® Server	Microsoft Visual Studio
Microsoft Office	Microsoft Lync™								
Microsoft SharePoint	Windows and Windows Server®								
Microsoft SQL Server	Microsoft .NET								
Microsoft BizTalk® Server	Microsoft Visual Studio								

Partner with industry experts

Microsoft Dynamics AX 2012 is delivered by a global network of partners with deep Education experience. These business partners can provide you with assistance tailored to your specific needs—from solution selection, to planning and design, to customization and configuration, to implementation, training, and ongoing support. This means you can get world-class business solutions from professionals who understand how your institution works. To find a local Microsoft Dynamics partner and solutions for education, visit <http://dynamics.pinpoint.microsoft.com>.

Do more with less

Microsoft Dynamics AX 2012 offers a powerful, agile, simple solution for educational institutions striving to satisfy their administration, faculty and student expectations with cost-effective solutions. Accelerate your time to value by adopting Microsoft Dynamics AX 2012 today.

Learn more about Microsoft Dynamics AX 2012

Visit our website at www.microsoft.com/dynamics/AX.